



**RIMBUN
SANCTUARY**
Bukit Jelutong

Rimbun Sanctuary Apartments Floor Plans



1800 88 1118
www.simedarbyproperty.com

Malaysia's Top Property Developer



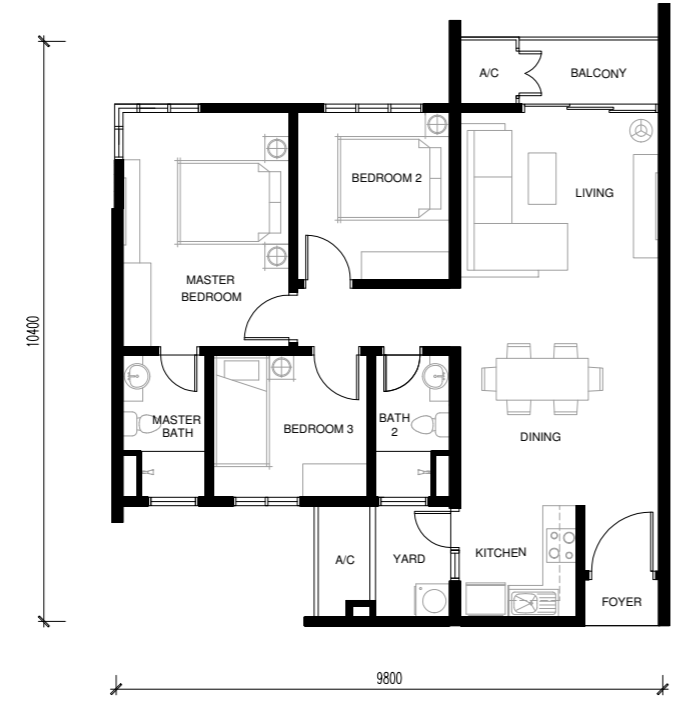
No of units: 40 and 68 | Type: Townhouse and Apartments | Expected Date of Completion: September 2018 | Land: Free from Encumbrances | Tenure of Land: Freehold | Developer's License No.: 6427-66/01-2019/01228 (L) | Validity: 15/01/2018 - 14/01/2019 | Advertising & Sales Permit No.: 6427-66/01-2019/01228 (P) | Validity: 15/01/2018 - 14/01/2019 | Approving Authority: Majlis Bandaraya Shah Alam | Building Plan Reference No.: MBSA/BGN/BB/600-1 (PS)/SEK.U8/0186-2014 | Developer: Sime Darby Property Berhad. (Co. No. 15631-P), Level 10, Block G, No. 2 Jalan PJU 1A/7A, Ara Damansara, 47301 Petaling Jaya, Selangor | Selling Price: Townhouse - RM 1,125,888 (min) - RM 1,755,888 (max) / Apartment - RM 677,888 (min) - RM 1,090,888 (max) | 7% Bumiputera Discount (Quota applies)

All illustrations are artist's impression only. The information contained herein is subject to change without notification as maybe required by the authorities or developer's architect. While every care has been taken into providing these information, it cannot form part of an offer or contract.



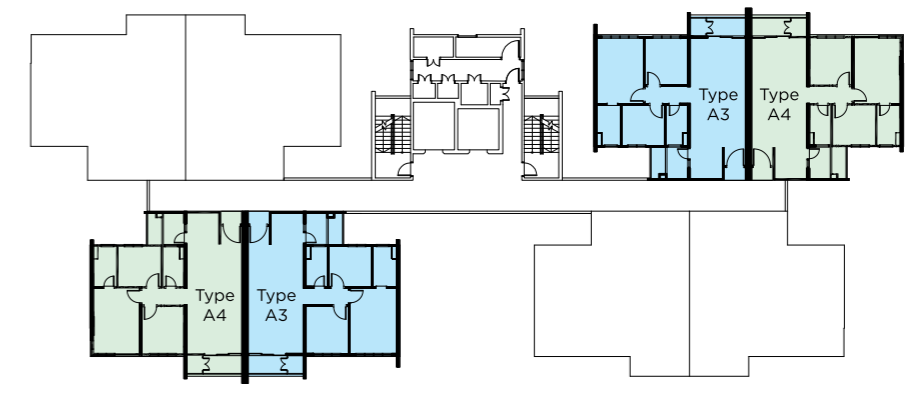
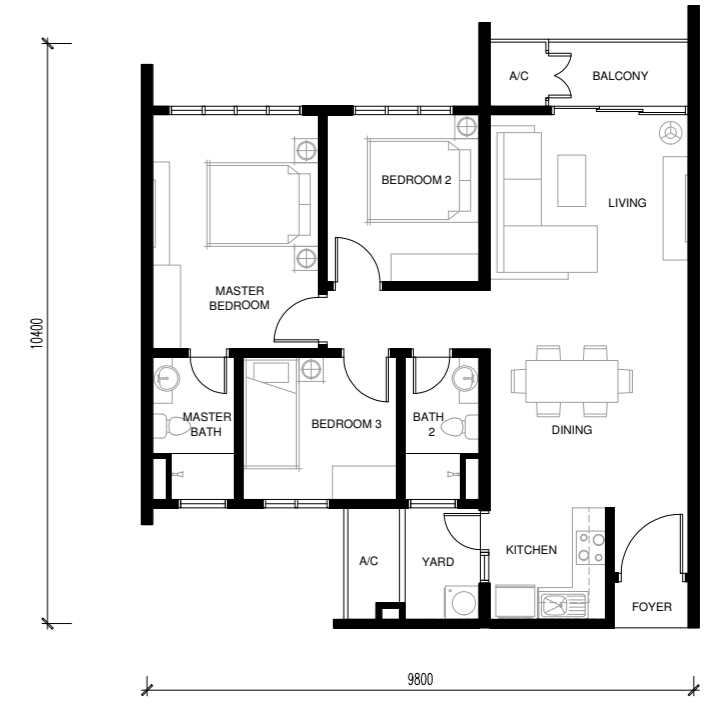
Type A1
907 SQ FT
3 Bedrooms | 2 Bathrooms

Level 1 - 8



Type A3
907 SQ FT
3 Bedrooms | 2 Bathrooms

Level 1 - 8



Type A2
907 SQ FT
3 Bedrooms | 2 Bathrooms


Level 1 - 8



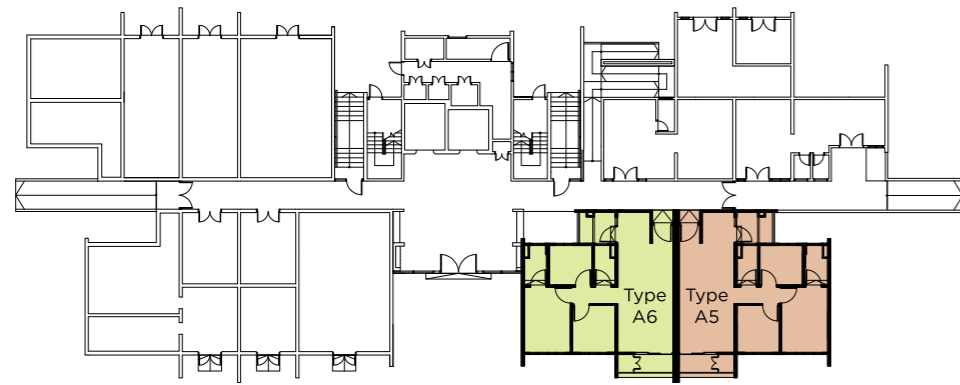
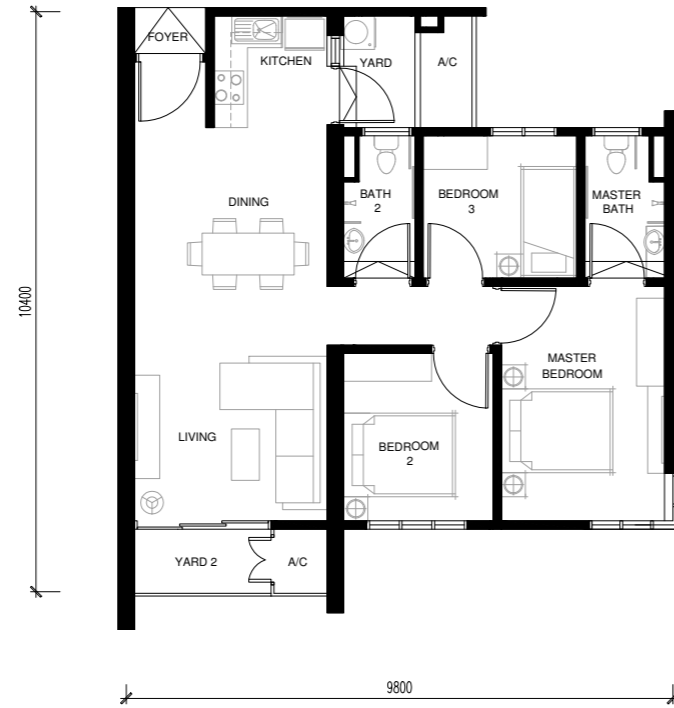
Type A4
907 SQ FT
3 Bedrooms | 2 Bathrooms

Level 1 - 8



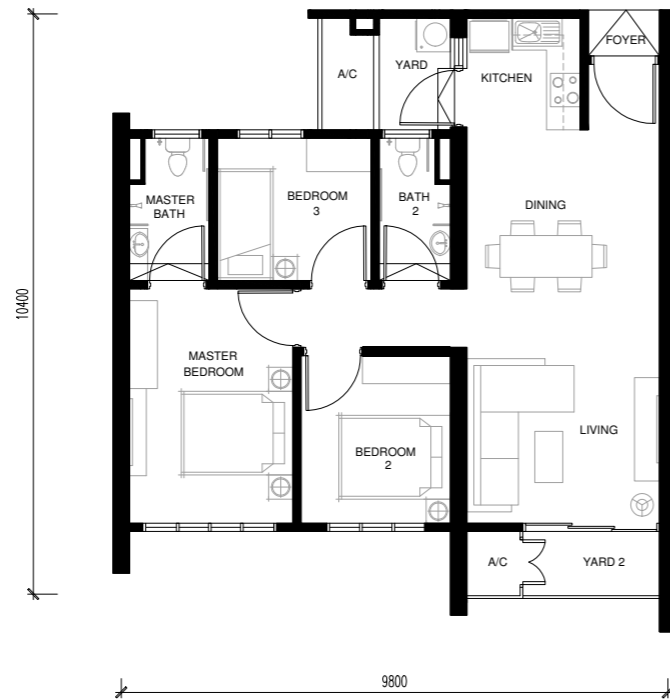
Type A5 (Disabled Unit )
907 SQ FT
3 Bedrooms | 2 Bathrooms

Level G



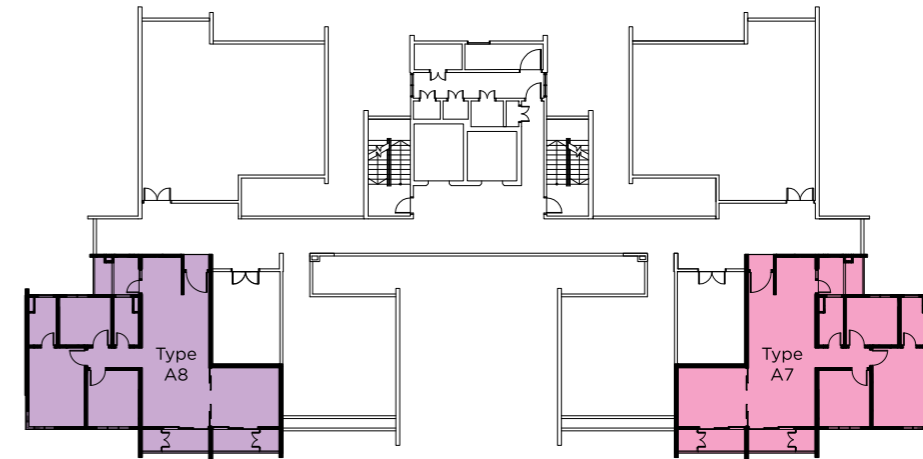
Type A6 (Disabled Unit )
907 SQ FT
3 Bedrooms | 2 Bathrooms

Level G



Type A7 with Lanai
1,091 SQ FT
3 Bedrooms | 2 Bathrooms

Level 9



Type A8 with Lanai
1,091 SQ FT
3 Bedrooms | 2 Bathrooms

Level 9



Rimbun Sanctuary Apartments Storey Plan

	ROOF								
9th Floor	M&E		TYPE A8 A-09-01	ROOFTOP GARDEN		M&E	TYPE A7 A-09-02	ROOFTOP GARDEN	
8th Floor	TYPE A2 A-08-03A	TYPE A1 A-08-03	TYPE A4 A-08-02	TYPE A3 A-08-01		TYPE A3 A-08-05	TYPE A4 A-08-06	TYPE A1 A-08-07	TYPE A2 A-08-08
7th Floor	TYPE A2 A-07-03A	TYPE A1 A-07-03	TYPE A4 A-07-02	TYPE A3 A-07-01		TYPE A3 A-07-05	TYPE A4 A-07-06	TYPE A1 A-07-07	TYPE A2 A-07-08
6th Floor	TYPE A2 A-06-03A	TYPE A1 A-06-03	TYPE A4 A-06-02	TYPE A3 A-06-01		TYPE A3 A-06-05	TYPE A4 A-06-06	TYPE A1 A-06-07	TYPE A2 A-06-08
5th Floor	TYPE A2 A-05-03A	TYPE A1 A-05-03	TYPE A4 A-05-02	TYPE A3 A-05-01		TYPE A3 A-05-05	TYPE A4 A-05-06	TYPE A1 A-05-07	TYPE A2 A-05-08
4th Floor	TYPE A2 A-03A-03A	TYPE A1 A-03A-03	TYPE A4 A-03A-02	TYPE A3 A-03A-01		TYPE A3 A-03A-05	TYPE A4 A-03A-06	TYPE A1 A-03A-07	TYPE A2 A-03A-08
3rd Floor	TYPE A2 A-03-03A	TYPE A1 A-03-03	TYPE A4 A-03-02	TYPE A3 A-03-01		TYPE A3 A-03-05	TYPE A4 A-03-06	TYPE A1 A-03-07	TYPE A2 A-03-08
2nd Floor	TYPE A2 A-02-03A	TYPE A1 A-02-03	TYPE A4 A-02-02	TYPE A3 A-02-01		TYPE A3 A-02-05	TYPE A4 A-02-06	TYPE A1 A-02-07	TYPE A2 A-02-08
1st Floor	TYPE A2 A-01-03A	TYPE A1 A-01-03	TYPE A4 A-01-02	TYPE A3 A-01-01		TYPE A3 A-01-05	TYPE A4 A-01-06	TYPE A1 A-01-07	TYPE A2 A-01-08
Ground Floor	M&E	M&E	M&E	M&E		COMMON FACILITIES	COMMON FACILITIES	TYPE A5 A-G-01	TYPE A6 A-G-02

NORTH FACING

SOUTH FACING

NORTH FACING

SOUTH FACING

Rimbun Sanctuary Apartments Specifications

STRUCTURE	Reinforced Concrete		
WALL	Concrete/Masonry		
ROOF COVERING	Metal/Concrete		
ROOF FRAMING	Metal/Concrete		
CEILING	Plaster Board/Skim Coat		
WINDOW	Aluminium Frame		
DOOR	Fire Rated (Main Door) Timber Flush Aluminium Louvered Aluminium Sliding		
IRONMONGERY	Lockset with Accessories		
WALL FINISH	General Bathroom Kitchen	Plaster & Paint Porcelain Tiles Porcelain Tiles (Up to 5ft/Plaster & Paint)	
FLOOR FINISH	Foyer Living/Dining/Kitchen Lanai (A7-8 only) Bedroom Bathroom Balcony/Yard	Porcelain Tiles Porcelain Tiles Porcelain Tiles Laminated Timber Porcelain Tiles Homogenous Tiles	
SANITARY & PLUMBING FITTING	Sanitary Wares & Fittings		
ELECTRICAL INSTALLATION	Light Point Power Point Fan Point Bell Point Water Heater Socket Point A/C Point TV Point Fiber Wall Socket Electrical DB	A1-A6 15 18 5 1 2 3 2 1 1	A7-A8 18 19 5 1 2 3 2 1 1
INTERNAL TELEPHONE TRUNKING & CABLING	Concealed		